

INTRODUCTION

Congratulations on the purchase of your Kingston® PC Card Reader. The PCREAD/ATA reader uses ATA compatible Type II PC storage cards. This document includes the necessary instructions for connecting the card reader to PC based computers. The drivers included with this product support Windows 95, Windows 98, Windows Millennium, Windows NT 4.0 and Windows 2000. Windows XP offers built in support.

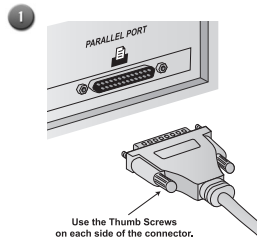
Veillez trouver le manuel en langue française sur le CD-ROM.

Bitte finden Sie die deutsche Bedienungsanleitung auf der CD-ROM.

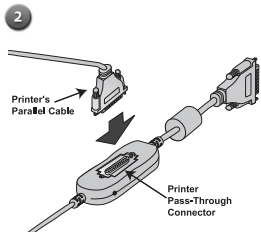
HARDWARE INSTALLATION

Before beginning, ensure of the following:

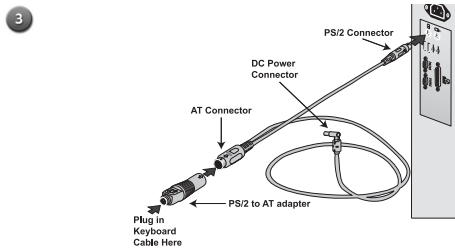
- Place the computer's power switch in the OFF position.
- Unplug the keyboard from your computer's rear panel.
- If present, place the printer's power switch in the OFF position.
- If present, disconnect the cable from your computer's parallel port that connects your printer.



Plug the card reader's 25-pin connector into your computer's parallel port connector. To make sure the card reader doesn't pull loose, tighten the thumb screws as shown above.

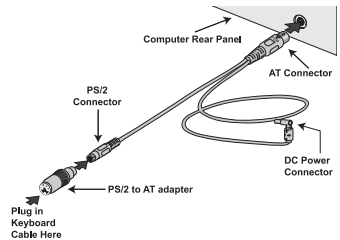


OPTIONAL: If using a printer, connect the parallel cable extending from the printer to the printer pass-through connector.



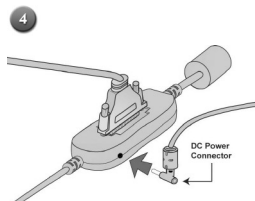
For PS/2 style keyboards

- Plug the end of the power adapter cable with the PS/2 connector into your computer's keyboard port.
- Plug the end of the power adapter cable with the AT connector into the "PS/2 to AT adapter".
- Plug your keyboard cable into the PS/2 connector on the end of the "PS/2 to AT adapter".



For AT style keyboards

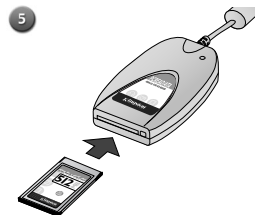
- Plug the end of the power adapter cable with the AT connector into your computer's keyboard port.
- At the opposite end of the power adapter cable, plug in the "PS/2 to AT adapter".
- Plug the cable extending from your keyboard into the "PS/2 to AT adapter".



In order to function, your PCREAD/ATA requires a DC power source. The PCREAD/ATA installation kit includes an adapter cable that uses your computer's keyboard connector to provide power to the unit. Connect this adapter cable to the PCREAD/ATA as shown above.

WINDOWS 2000

1. Connect the hardware as shown under '**HARDWARE INSTALLATION**'.
2. Upon startup, Windows will display the 'Found New Hardware Wizard', click 'Next' to continue.
3. Select 'Search for a suitable driver for my device (recommended)' and click 'Next'.
4. Select the 'Specify a location' option only and click 'Next'.
5. Insert the Kingston Media Readers CD-ROM.
6. Type in **D:\BIN\PCREAD-ATA\WIN2000** in the 'Copy manufacturer's file from:' field (where D represents your CD-ROM drive letter) and click 'OK'.
7. Windows will display a message that it has located a driver for the device, click 'Next' to continue.
8. Click 'Finish' to complete the driver installation.
9. A new drive letter will be created and the card can be accessed via the 'My Computer' utility.



Insert a Type II PC Card into the reader with the logo facing up as shown above.

Hardware installation is complete. Proceed to the appropriate operating system instructions.

WINDOWS 95, WINDOWS 98, WINDOWS MILLENNIUM, AND WINDOWS NT 4.0

1. Insert the Kingston Media Reader Drivers CD into your CD-ROM drive. The CD will autostart upon insertion.
2. Select 'Parallel Port Media Reader' from the main screen.
3. Select 'PCREAD/ATA PC Card Reader' from the menu.
4. Select 'Install Driver' from the menu.
5. The "InstallShield® Wizard" screen will appear. Click 'Next' to continue.
6. The License Agreement will appear. Click 'Yes' to continue.
7. Choose a destination location and click 'Next' to continue.
8. Select a program folder and click 'Next' to continue.
9. Click 'Next' to start copying files.
10. A message will be displayed to inform you of the drive letter assignment, click 'Ok' to continue.
11. Uncheck the View Readme option and click 'Finish'.

WINDOWS XP

The driver is built in to the Windows XP operating system.

1. Power down your system and connect the PCREAD/ATA (as shown under '**HARDWARE INSTALLATION**').
2. Upon startup, Windows XP will detect and install the correct drivers.
3. A new drive letter will be created and the card can be accessed via the 'My Computer' utility.