

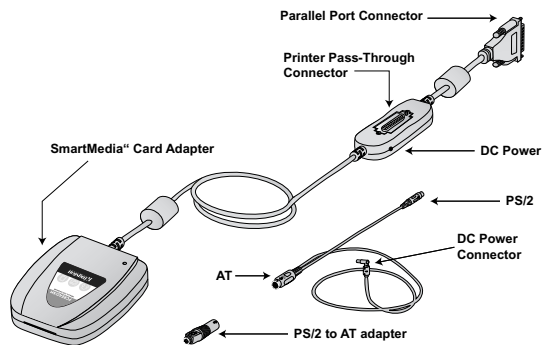
INTRODUCTION

Congratulations on the purchase of your Kingston® SmartMedia™ Card Reader. The PCREAD/SM reader uses SmartMedia™ storage media. This document includes the necessary instructions for connecting the card reader to PC based computers.

The drivers included with this product support Windows 95, Windows 98, Windows 98, Windows Millennium, and Windows NT 4.0.

Veillez trouver le manuel en langue française sur le CD-ROM.

Bitte finden Sie die deutsche Bedienungsanleitung auf der CD-ROM.

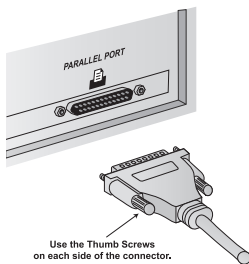


WINDOWS 95, WINDOWS 98, WINDOWS MILLENNIUM, AND WINDOWS NT 4.0

Before beginning, ensure of the following:

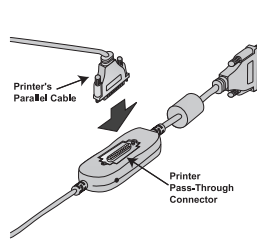
- Place the computer's power switch in the OFF position.
- Unplug the keyboard from your computer's rear panel.
- If present, place the printer's power switch in the OFF position.
- If present, disconnect the cable from your computer's parallel port that connects your printer.

1



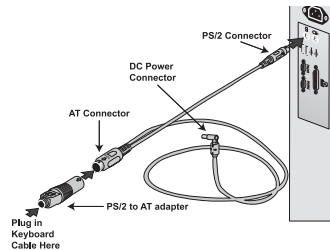
Plug the card reader's 25-pin connector into your computer's parallel port connector. To make sure the card reader doesn't pull loose, tighten the thumb screws as shown above.

2



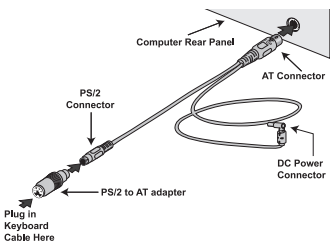
OPTIONAL: If using a printer, connect the parallel cable extending from the printer to the printer pass-through connector.

3



For PS/2 style keyboards

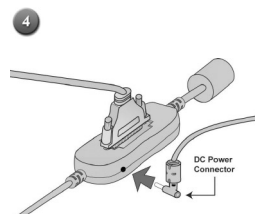
- Plug the end of the power adapter cable with the PS/2 connector into your computer's keyboard port.
- Plug the end of the power adapter cable with the AT connector into the "PS/2 to AT adapter".
- Plug your keyboard cable into the PS/2 connector on the end of the "PS/2 to AT adapter".



For AT style keyboards

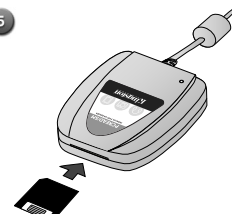
- Plug the end of the power adapter cable with the AT connector into your computer's keyboard port.
- At the opposite end of the power adapter cable, plug in the "PS/2 to AT adapter".
- Plug the cable extending from your keyboard into the "PS/2 to AT adapter".

4



In order to function, your PCREAD/SM requires a DC power source. The PCREAD/SM installation kit includes an adapter cable that uses your computer's keyboard connector to provide power to the unit. Connect this adapter cable to the PCREAD/SM as shown above.

5



The SmartMedia's metallic surface must face down when inserting the card into the adapter.

6

Insert the Kingston Media Reader Drivers CD into your CD-ROM drive. The CD will autostart upon insertion.

7

Select 'Parallel Port Media Reader' from the main screen.

8

Select 'PCREAD/SM SmartMedia™ Reader' from the menu.

9

Select 'Install Driver' from the menu.

10

The "InstallShield® Wizard" screen will appear. Follow the on-screen prompts to complete the driver installation. Restart your system when prompted.

11

The card can be accessed via the Windows Explorer or My Computer utilities. Transferring file to and from the card is a simple drag-and-drop operation.